

ISOCHRYYSIS 1800

ISOCHRYYSIS 1800 IS A REFRIGERATED, WHOLE-CELL CONCENTRATE OF ISOCHRYYSIS MICROALGAE WHICH IS VERY HIGH IN DHA, PHOSPHOLIPIDS AND CAROTENOIDS. STRAIN: TISOCHRYYSIS LUTEA, CCMP1324



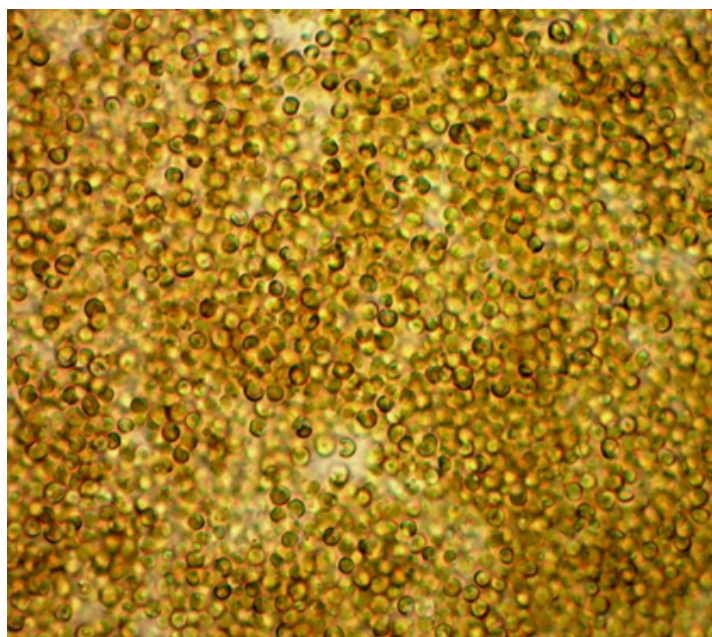
PRODUCT DESCRIPTION

Refrigerated Isochrysis For Rotifer Enrichment and Greenwater

Isochrysis 1800 is a refrigerated, whole-cell concentrate of Isochrysis micoralgae, Iso 1800 will enrich rotifers and maintain the DHA/EPA ratio of your rotifers in larval tanks. High in carotenoids, and phospholipids. Strain: Tisochrysis lutea, CCMP1324

FEATURES & BENEFITS

- High levels of lipids, DHA, and carotenoids
- Effective feed supplement and live algae replacement
- Biosecure
- Exceptionally clean
- Easy to use
- Always available



DIRECTIONS



1. Dilution and mixing:

- Add system water to a small bucket.
- Add Iso 1800 and stir.
- DO NOT BLEND; it is unnecessary and may damage the algae cells.
- Pour into rotifer enrichment tank or larvae tank. Pouring through a 20-micron screen can improve dispersion

2. Feed according to the table below.

Adjust dosage to meet the needs of your hatchery and larvae.

3. Divide daily ratio into 4–6 feedings per day.

4. Refrigerate Iso 1800 when not in use.

TYPICAL FEEDING RATION

Greenwater:

Light dose: 4.5 ml/1,000 liters (20,000 cells/ml)

Heavy dose: 20 ml/1,000 liters (625,000 cells/ml)

Feed 4-6 times per day

Rotifer Enrichment:

Feed rotifers for 24 hours from the table below.

Divide the feed into 4–6 feedings.

	100% ISO 1800 ENRICHMENT	25% ENRICHMENT SUPPLEMENT	10% ENRICHMENT SUPPLEMENT
ISO 1800/ MILLION ROTIFERS	4ml/million rotifers	1ml/million rotifers	0.4ml/million rotifers



PHYSICAL PROPERTIES

- APPEARANCE VISCOUS: BROWN CONCENTRATE
- ALGAL CELL SIZE: 5 - 6 MICRONS
- CELL DENSITY: 4.1 BILLION CELLS/ML
- ALGAL BIOMA: 80G DRY BIOMASS/L
- INGREDIENTS: PHOTOTROPHICALLY GROWN MICROALGAE AND SALTWATER

COMPOSITION OF DRY ALGAL BIOMASS

- PROTEIN 47%
- TOTAL LIPIDS 19%
- DHA 10.2%
- EPA 0.9%
- ARA 0.6%
- CARBOHYDRATE 24%
- ASH 10.0%

COMPOSITION OF LIQUID PRODUCT

- PROTEIN > 3.7%
- LIPIDS > 1.5%
- CARBOHYDRATE > 1.9%
- ASH < 8.0%
- MOISTURE < 85%

MICROBIAL SPECIFICATION

- COLIFORM BACTERIA: 2 <0.3 MPN/ML
- SALMONELLA: NEGATIVE
- KNOWN PATHOGENIC MARINE BACTERIA: NEGATIVE

PACKAGING **1-QUART BOTTLE, 1-LITER BAG, 10-LITER CUBITANER®**

STORAGE **4-MONTH SHELF LIFE WHEN REFRIGERATED | DO NOT FREEZE**