

PAV 1800™

REFRIGERATED PAVLOVA

Pav 1800™ is a refrigerated, whole-cell concentrate of Pavlova sp. microalgae.

PRODUCT DESCRIPTION

Refrigerated Pavlova For Bivalve Larvae, Spat, Broodstock, and more

Pav 1800™ is a refrigerated, whole-cell concentrate of Pavlova sp. microalgae. Pav 1800™ a small golden / brown flagellate similar to Isochrysis, is very high in EPA, DHA and carotenoids (Strain: Pavlova sp, CCMP 459).



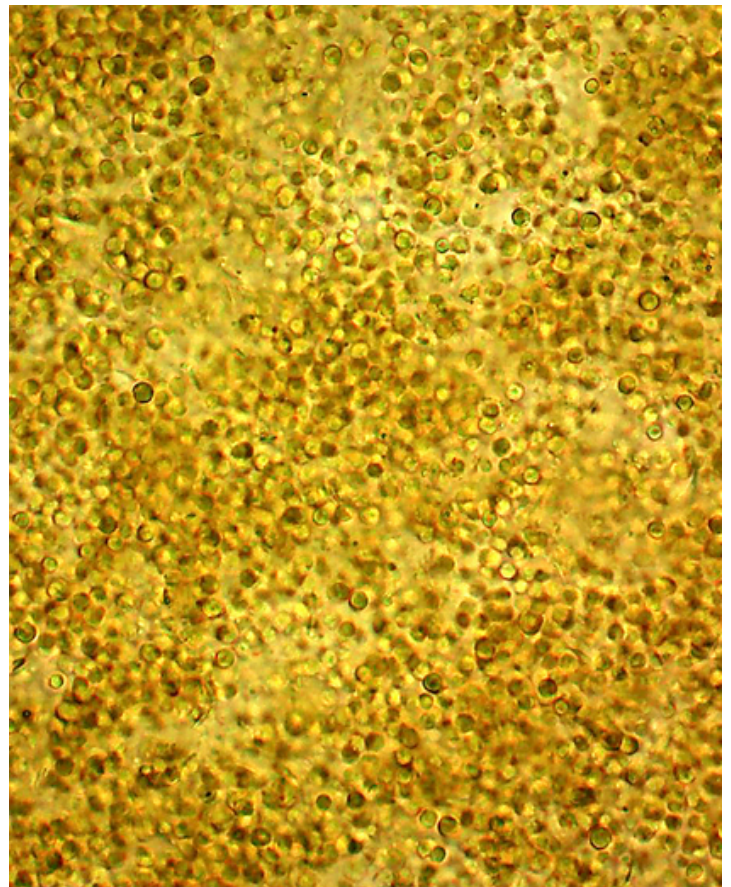
APPLICATIONS & BENEFITS

Applications

- Peak Load Supplement
- 100% live algae replacement
- Remote set
- Back-up feed supply

Benefits

- High levels of balanced lipids (DHA, EPA), protein and carotenoids
- Has been Indicated to synchronize setting
- Effective feed supplement and live algae replacement
- Biosecure
- Exceptionally Clean
- Easy to use



DIRECTIONS



1. When water is circulated with a centrifugal pump, such as with an upweller, add in front of the pump intake and the pump will disperse the algae cells.
2. When feeding into open tanks or header tanks, pre-dilute the algae 10:1 with system water.
 - Add system water to a small bucket.
 - Add PAV 1800 and stir.
 - DO NOT BLEND; it is unnecessary and may damage the algae cells.
 - Pour into larvae tank or spat.
 - Pouring through a 20-micron screen can improve dispersion.
3. Feed according to the table below. Adjust dosage to meet the needs of your hatchery and larvae.
4. Refrigerate bottle when not in use.

TYPICAL FEEDING RATION

Larvae:

Feed according to shell length. Shell length on a given day is an estimate. Larviculture may run up to 20 days.

Daily Feed Rates per million larvae, for *Crassostrea virginica* (from FAO protocol).

DAY	Mean shell length	PAV 1800 (ml)		<i>Liters of live Isochrysis (4x10⁶ cells/ml)</i>
2	75	0.4	=	0.4
3	95	0.6	=	0.6
4	100	0.7	=	0.7
5	115	2.2	=	2.1
6	130	3.8	=	3.6
7	145	5.4	=	5.1
8	160	6.9	=	6.6
9	190	9.9	=	9.5
10	220	13.0	=	12.4
11	240	15.1	=	14.4
12	260	17.1	=	16.3
13	270	18.2	=	17.3
14	280	19.2	=	18.3

Spat:

Feed By Live Weight

- 0.7ml PAV 1800 per gram live weight of spat per day
- Works for all sizes of spat

– OR –

Feed by Seed Count and Size

Length (mm)	PAV 1800 feed per day
0.3	7 ml
0.5	50 ml
1.0	214 ml
2.0	1.6 Liters
3.0	4.9 Liters

Feeding Broodstock Conditioning and Fattening

Typical Broodstock Feed Rates:

0.03 – 0.06 ml PAV 1800 per gram wet meat weight per day

-OR-

0.3 – 1.2 ml PAV 1800 per adult animal per day (depending on feed ration and size*)

Packaging	1-quart bottle, 1-liter bag, 10-liter cubitaner®
Storage	4-month shelf life when refrigerated
Tip	Do not freeze

PHYSICAL PROPERTIES	
Description	100% Pavlova sp.
Appearance	Viscous brown concentrate
Cell Size	4 - 7 microns
Cell Density	~3.9 Billion cells per ml
Algal Dry Biomass	80g Biomass/L

COMPOSITION OF DRY ALGAL BIOMASS (TYPICAL)

Protein	51%
Lipids	19%
DHA (% of lipids)	6.0%
EPA (% of lipids)	20.7%
ARA (% of lipids)	0.6%
Carbohydrate	22.0%
Ash	8%

COMPOSITION OF LIQUID PRODUCT

Protein	> 4.0%
Lipids	> 1.5%
Carbohydrate	> 1.7%
Ash	< 8.0%
Moisture	< 87%

MICROBIAL SPECIFICATION

Coliform Bacteria	<0.3 mpn/mL
Salmonella	Negative
Known pathogenic marine bacteria	Negative