

# ROTIgROW ONESTEP™

## Frozen Microalgal Blend

A frozen blend of 7 microalgae for maximum Rotifer Production with full Rotifer Enrichment. High in carotenoids and phospholipids. 2-year frozen shelf life with a 3-week refrigerated shelf life.



### PRODUCT DESCRIPTION

#### Frozen Microalgal Blend for Rotifer Production with Full Rotifer Enrichment

RotiGrow OneStep™ is a frozen blend of 7 microalgae for maximum Rotifer Production with full Rotifer Enrichment. High in carotenoids and phospholipids. 2-year frozen shelf life with a 3-week refrigerated shelf life.

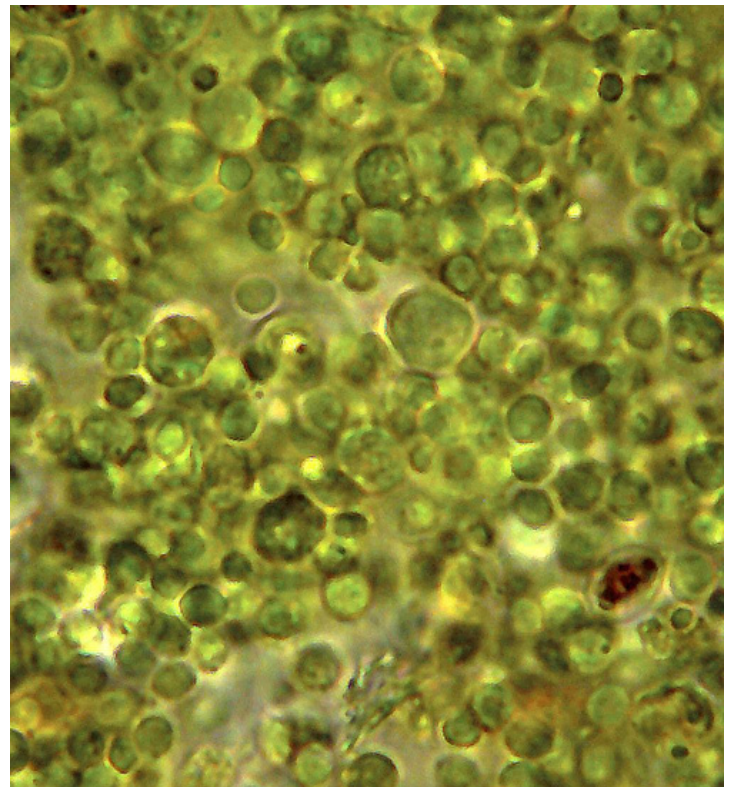
### APPLICATIONS & BENEFITS

#### Applications

- Rotifer production
- Rotifer enrichment

#### Benefits

- Biosecure
- One Step production with high enrichment including astaxanthin
- Healthy vigorous rotifers
- Exceptionally clean
- Easy to use



## DIRECTIONS



1. Defrost frozen Rotigrow OneStep slowly in a refrigerator overnight. Rotigrow OneStep can be poured directly into the larval tank, but pre-diluting. (Note: 10 liter Cubitainers and cases may require 2 days defrosting).
2. Mixing and screening are not necessary. DO NOT BLEND; it is unnecessary and may damage the algae cells.
3. Feed according to the table below. Adjust dosage to meet the needs of your hatchery and larvae.

## TYPICAL FEEDING PROTOCOL

### Rotifer Production:

Feed rates based on 165micron l-type rotifer with a mass of 0.18g dry weight/million rotifers

### Continuous:

- Feed rate: 2ml/million rotifers – use rotifer count after harvest
- Typical harvest is 35-40% per day
- Feed 4-6 times per day
- Feed continuously for best results
- Divide the daily feed rate by the number of feedings
- If you harvest more or less rotifers per day, adjust feeding according to the table below



HARVEST RATE	FEED / MILLION ROTIFERS (ML)	ROTIFERS PRODUCED PER LITER ROTIGROW ONESTEP
25%	1.2	320
35%	1.9	320
50%	3.4	320

### Batch Production:

- Feed rate: 2ml/million rotifers
- Feed 4-6 times per day or continuously
- Divide the daily feed rate by the number of feedings
- Feed continuously for best results
- For a faster or slower growth rate, use the table below

### Batch Production Systems:

	ROTIFER DENSITY (PER ML)					
ROTIGROW ONESTEP (FEED PER DAY PER MILLION ROTIFERS)	DAY 0	DAY 1	DAY 2	DAY 3	ROTIFER HARVEST (PER LITER OF FEED)	GROWTH RATE (PER DAY)
1.4 ml	500	706	996	1406	320 million	41%
2.0 ml	500	795	1264	2010	320 million	59%
2.9 ml	500	9910	1656	3013	320 million	82%

Nutritional Profile of Harvested Rotifers:

ROTIGROW ONESTEP	
PROTEIN	67%
LIPIDS	11.3%
DHA	26.5 mg/g *
EPA	8.0 mg/g *
ARA	5.7 mg/g *
HUFAS	50 mg/g *
POLAR LIPIDS	55%
STEROLS	4.4%
FREE FATTY ACIDS	5%
TRIGLICERIDES	35%

\* dry weight

PACKAGING	1-quart bottle, 1-liter bag, 10-liter cubitaner®
STORAGE	2 years shelf life when frozen 3 week refrigerated shelf life after defrosting
TIP	If thawed and won't be used within 12 to 14 weeks, freeze in standard ice cube for 24 hours. Store frozen cubes in plastic bag in freezer and then thaw before use.

PHYSICAL PROPERTIES	
APPEARANCE	Viscous green or brown Liquid
ALGAL CELL SIZE	1.5 - 12.0 microns
CELL DENSITY	Billion/ml
ALGAL BIOMASS	148g Dry biomass/L

### COMPOSITION OF DRY ALGAL BIOMASS

<b>PROTEIN</b>	<b>67.0%</b>
<b>LIPID</b>	<b>11.3%</b>
<b>EPA (% OF LIPIDS)</b>	<b>9.3%</b>
<b>DHA (% OF LIPIDS)</b>	<b>21.5%</b>
<b>ARA (% OF LIPIDS)</b>	<b>1.1%</b>
<b>CARBOHYDRATE</b>	<b>19.0%</b>
<b>ASH</b>	<b>3.5%</b>

### COMPOSITION OF LIQUID PRODUCT

<b>PROTEIN</b>	<b>&gt; 8.4%</b>
<b>LIPIDS</b>	<b>&gt; 2.8%</b>
<b>CARBOHYDRATE</b>	<b>&gt; 2.8%</b>
<b>ASH</b>	<b>&lt; 5.0%</b>
<b>MOISTURE</b>	<b>&lt; 81%</b>

### MICROBIAL SPECIFICATION

<b>COLIFORM BACTERIA</b>	<b>2 &lt;0.3 mpn/mL</b>
<b>SALMONELLA</b>	<b>Negative</b>
<b>KNOWN PATHOGENIC MARINE BACTERIA</b>	<b>Negative</b>